

Non-Insulated Female Terminals 50pc

A pack of 50 female, non-insulated terminals to suit Mercedes-Benz & BMW electrical connector sensors.

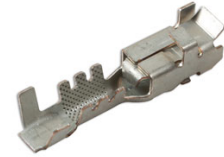
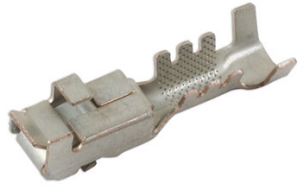


Additional Information

- Non-insulated female terminals used in: 2-pin ignition coil connectors (equivalent to OEM 12129142), Part No. 37427.
- Overall length: 16.16 x 3.65mm wide.
- For the perfect seal on the terminals & seals please use Laser ratchet crimping tool, Part No. 7642, which has specially designed jaws for a professional crimp.
- Included in assorted box of male & female terminals to suit Mercedes-Benz & BMW electrical sensors, Part No. 37685.
-

<http://product/37479>





Replacement Part No. 37479

ASSOCIATED PRODUCTS



37427 2-pin Ignition Coil Connector

